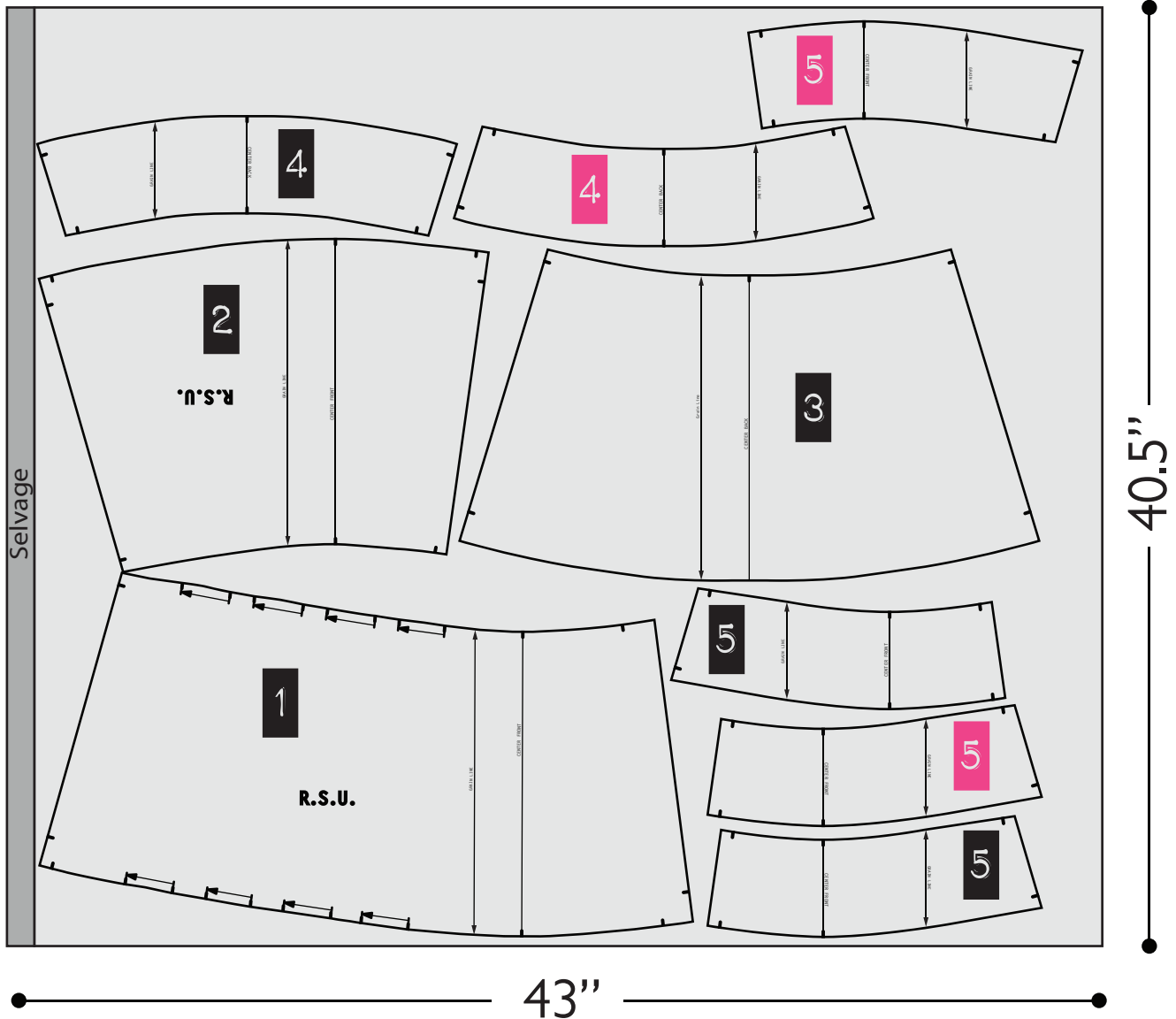


TEMPLATE

PATTERN LAYOUT

- Main Fabric: 1 1/8 yard x 43" wide
(103 cm x 109 cm wide)



- 1** front skirt panel - right (x1)
- 2** front skirt panel - left (x1)
- 3** back skirt panel (x1)
- 4** back yoke (x1)

- 5** front yoke (x2)
- 4** back yoke facing (x1)
- 5** front yoke facing (x2)

SYMBOL KEY



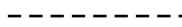
Notch: line up two or more pieces of fabric that you will be joining together.



Gather



Ease



Stretch



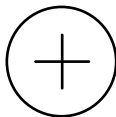
Matching point



Pleat direction



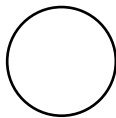
Slash



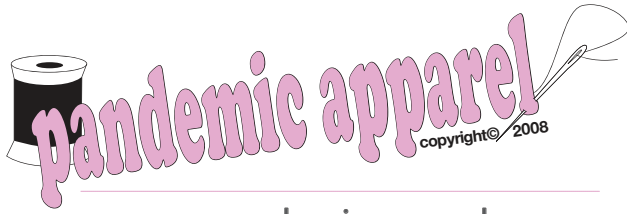
Button Placement



Buttonhole Placement

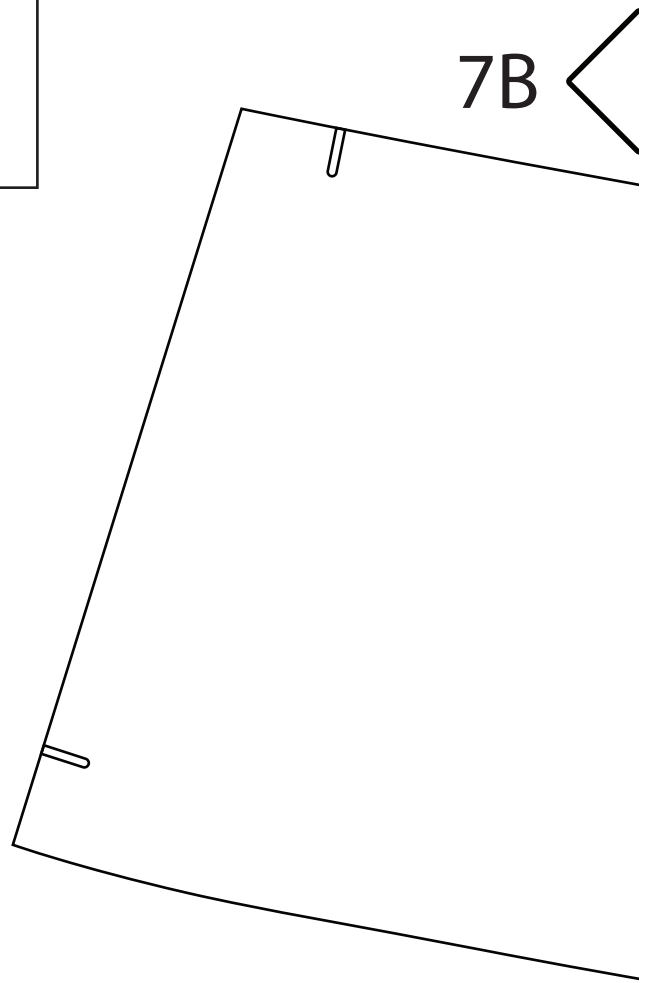


Snap Placement



www.pandemicapparel.com

Test Square
4" Square
10 cm Square

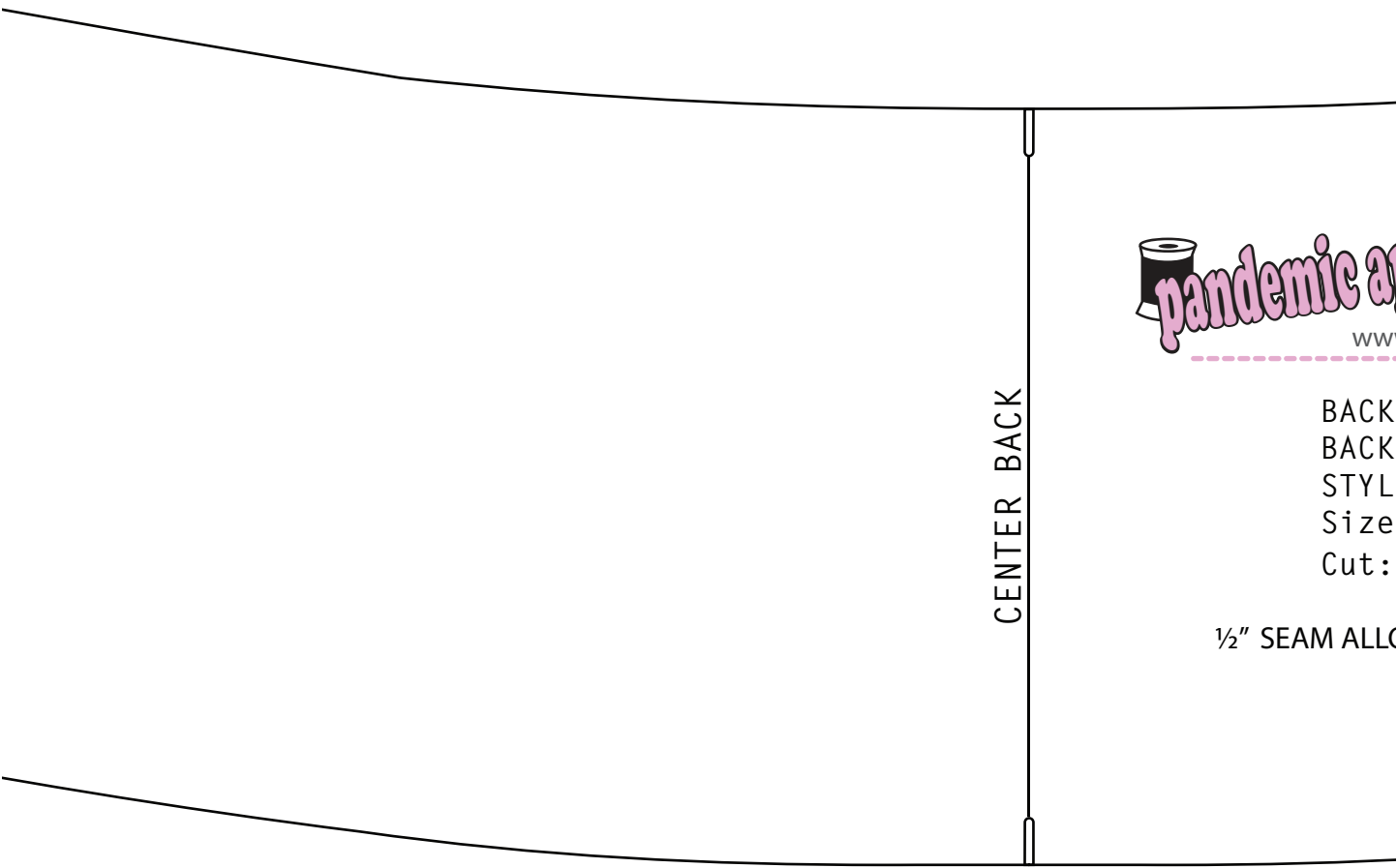


7B <

6C ^

7A <

> 7B



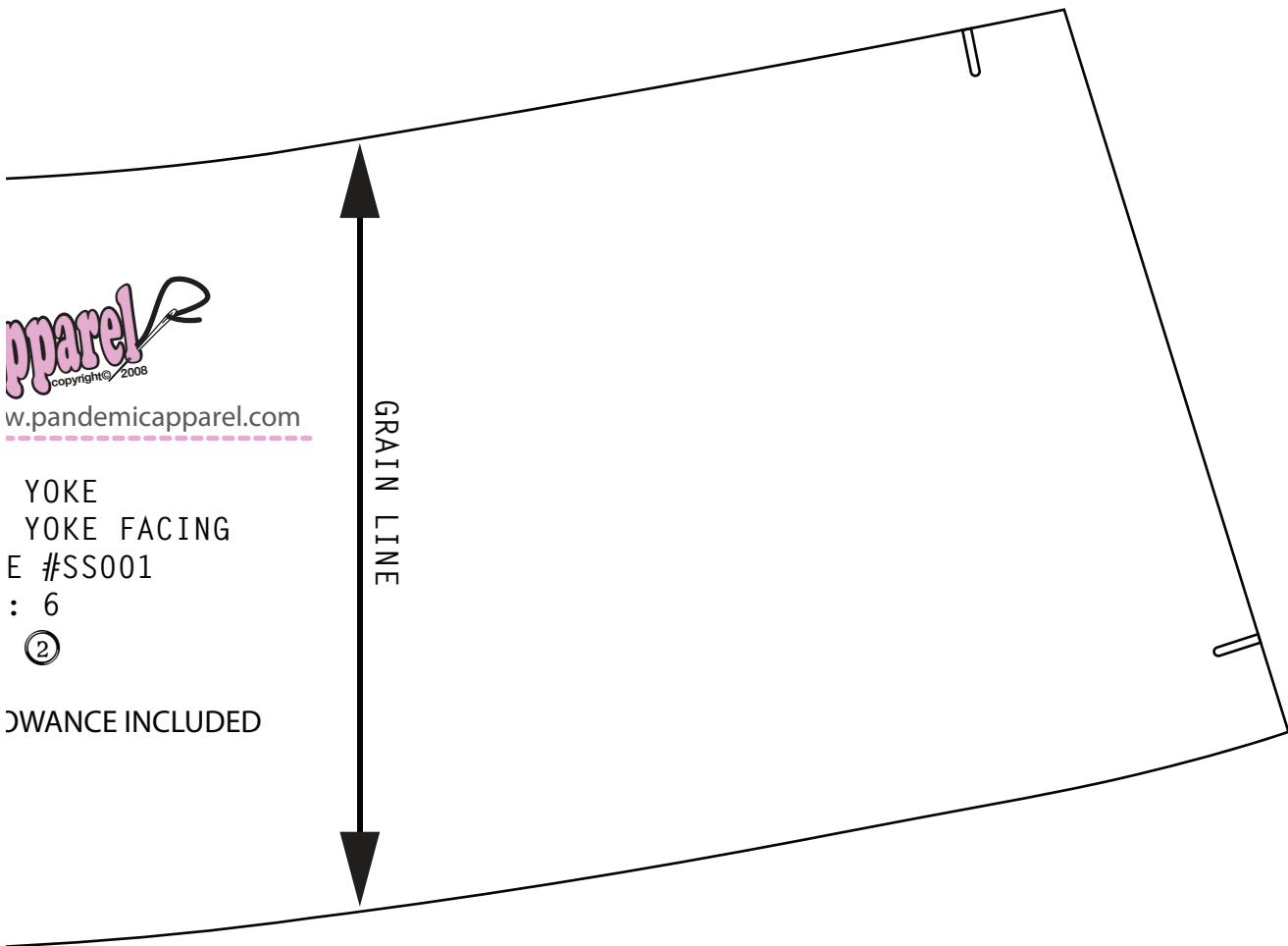
CENTER BACK

BACK
BACK
STYL
Size
Cut:

1/2" SEAM ALLC

6B >

>7A



w.pandemicapparel.com

YOKE
YOKE FACING
E #SS001
: 6
②

ADVANCE INCLUDED

6A
^

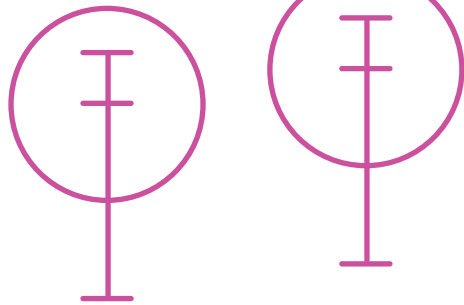


www.pandemicapparel.com

FRONT YOKE
FRONT YOKE FACING
STYLE #SS001
Size: 6
Cut: ④

1/2" SEAM ALLOWANCE INCLUDED

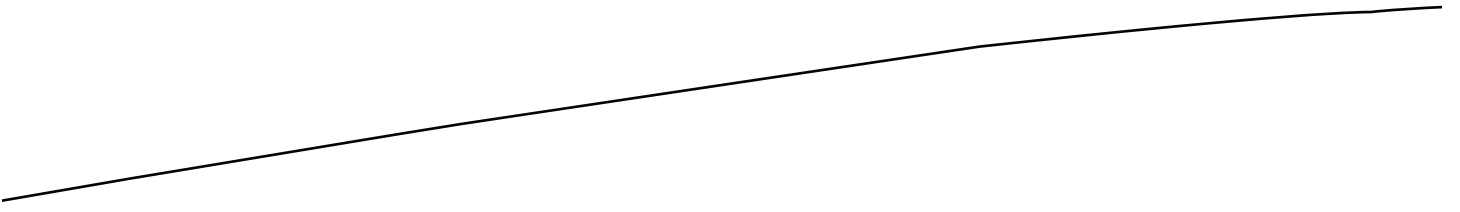
GRAIN LINE



4E

5D



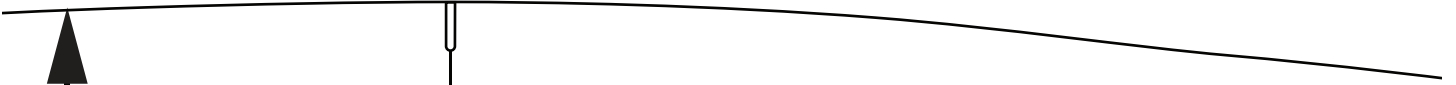


5C <

> 5D

4D
R.S.U.
1/2" SEAM ALLOWANCE INCLUDED

6C



5B

5C

GRAIN LINE

ENTER FRONT

4C



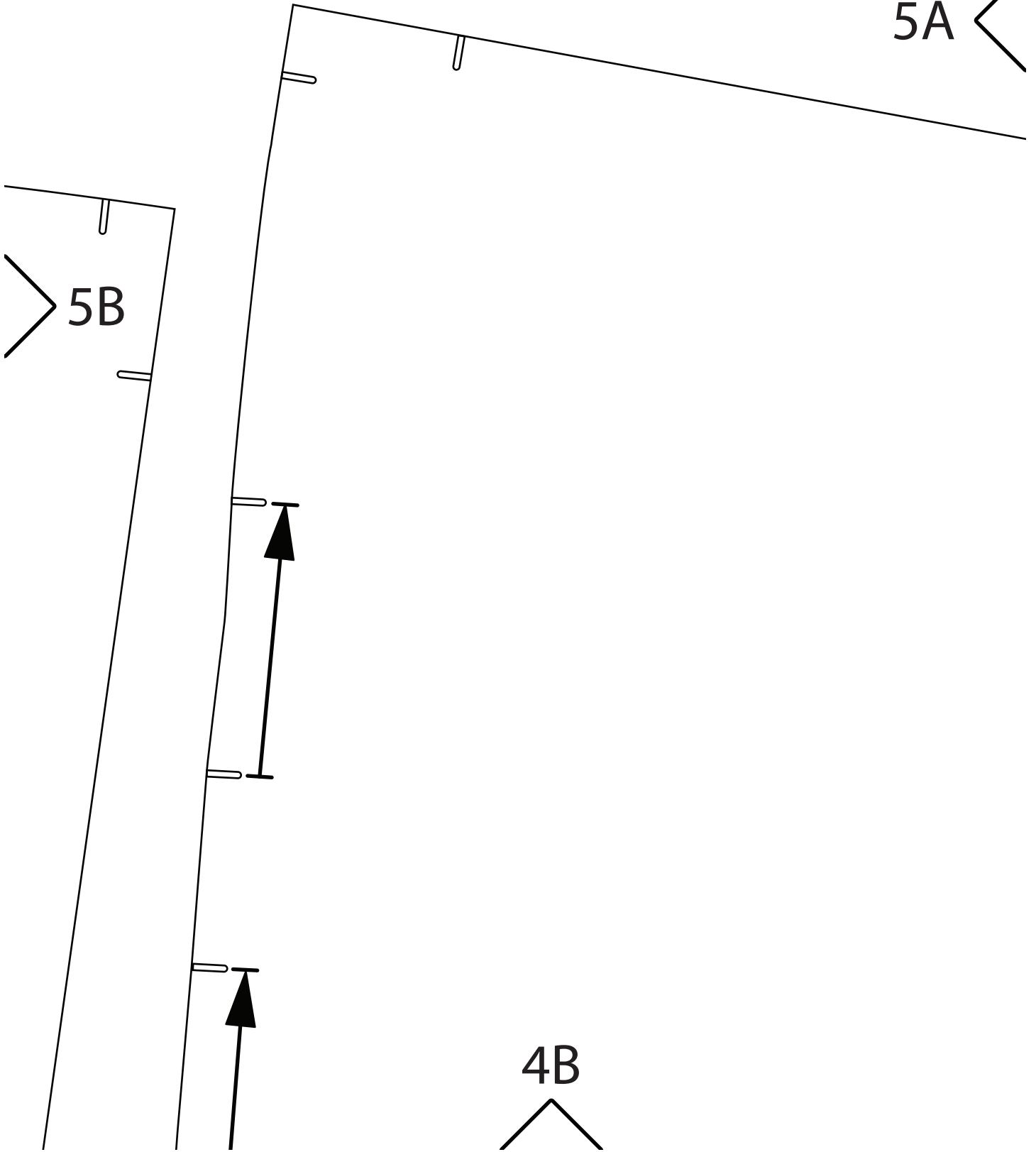
6B

5A



5B

4B

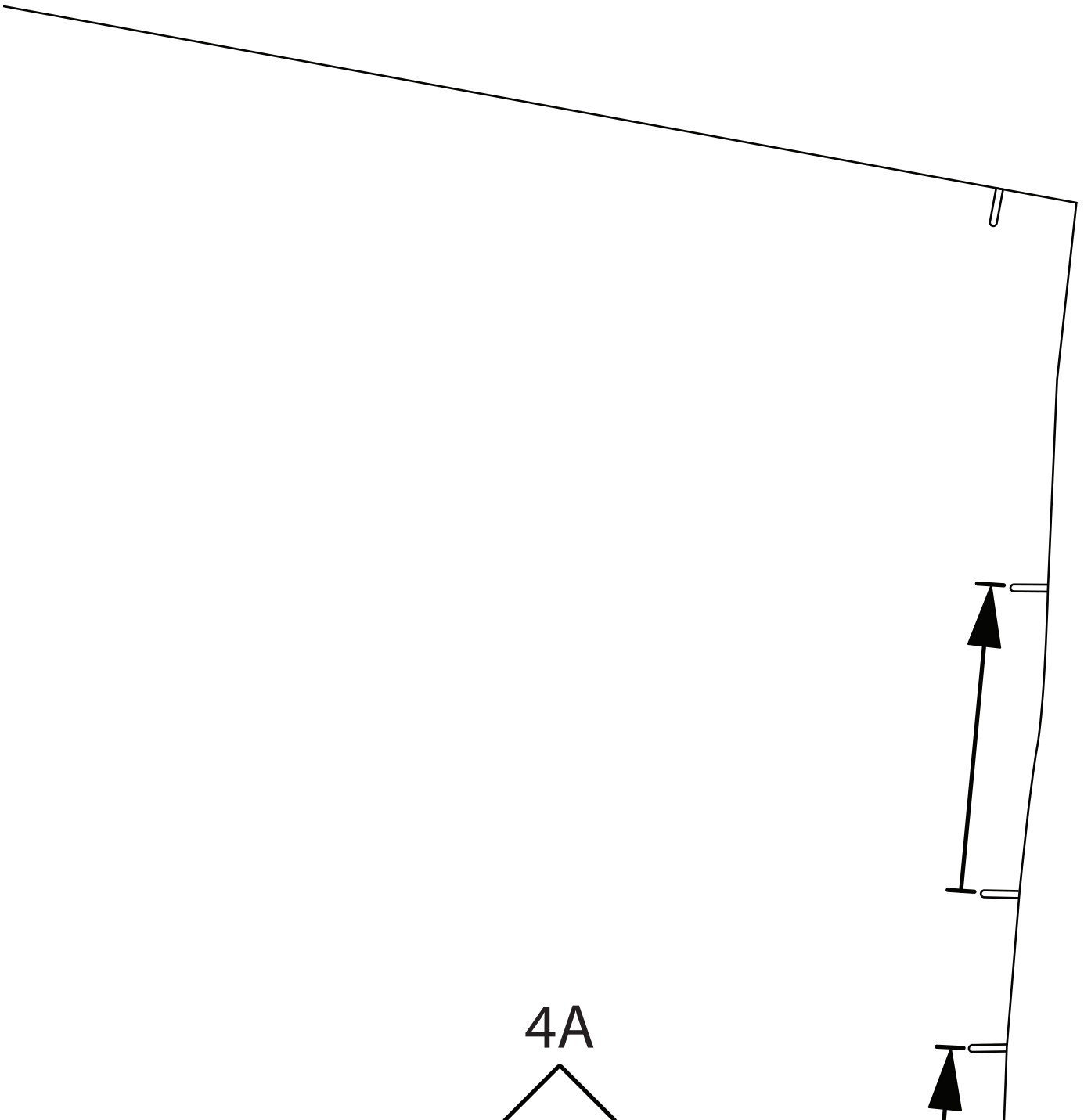


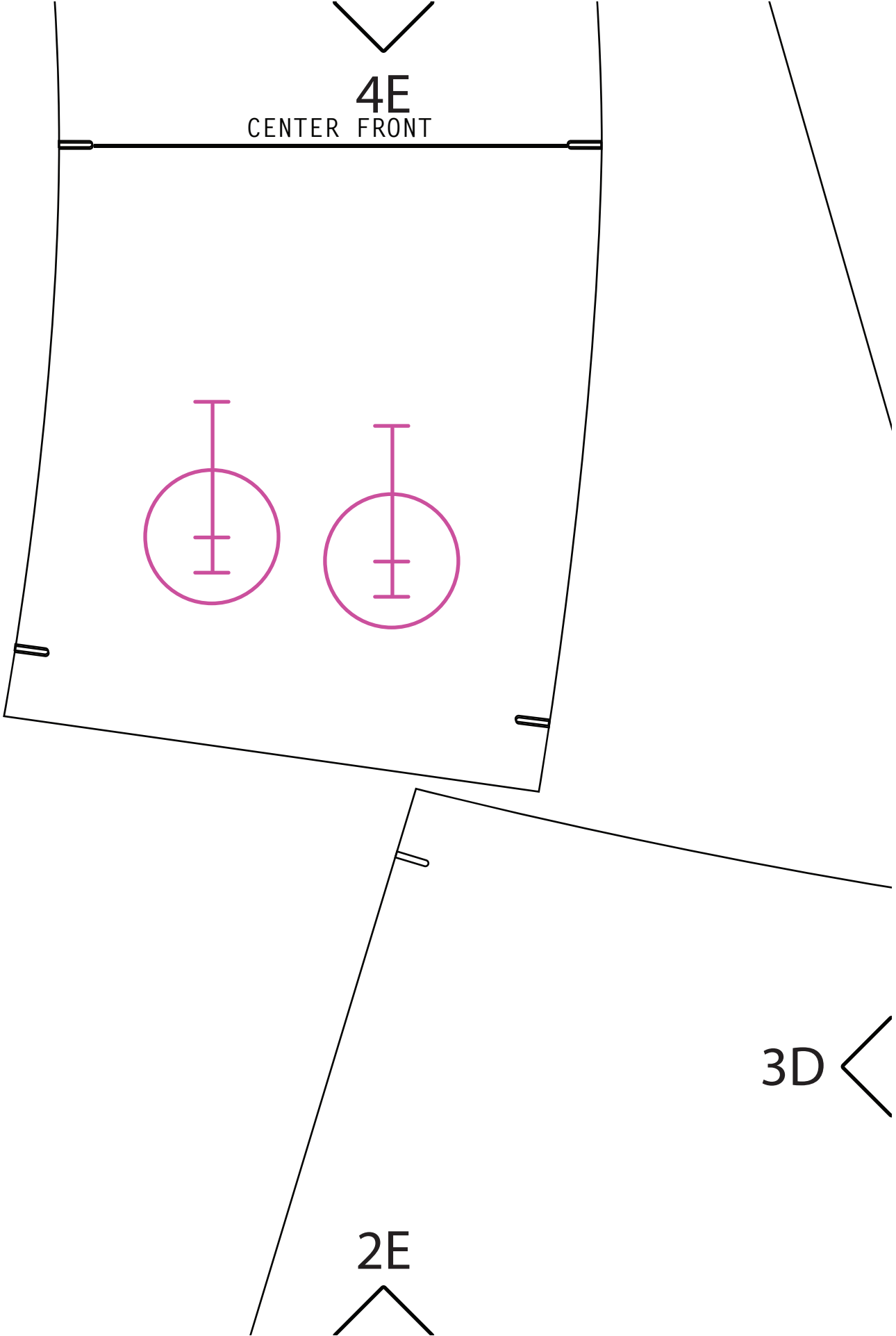


6A



5A







4D

FRONT SKIRT PANEL

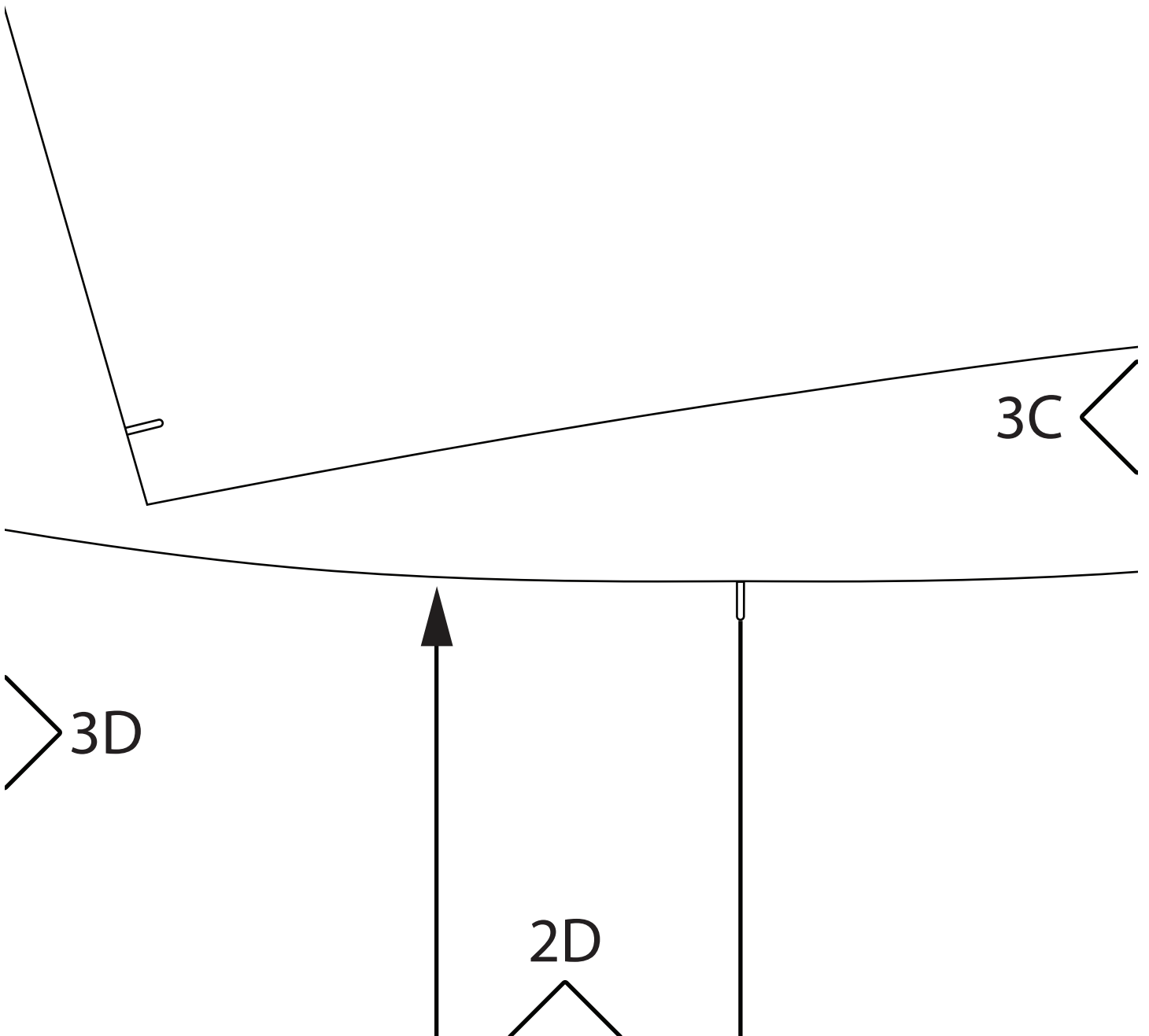
LEFT SIDE

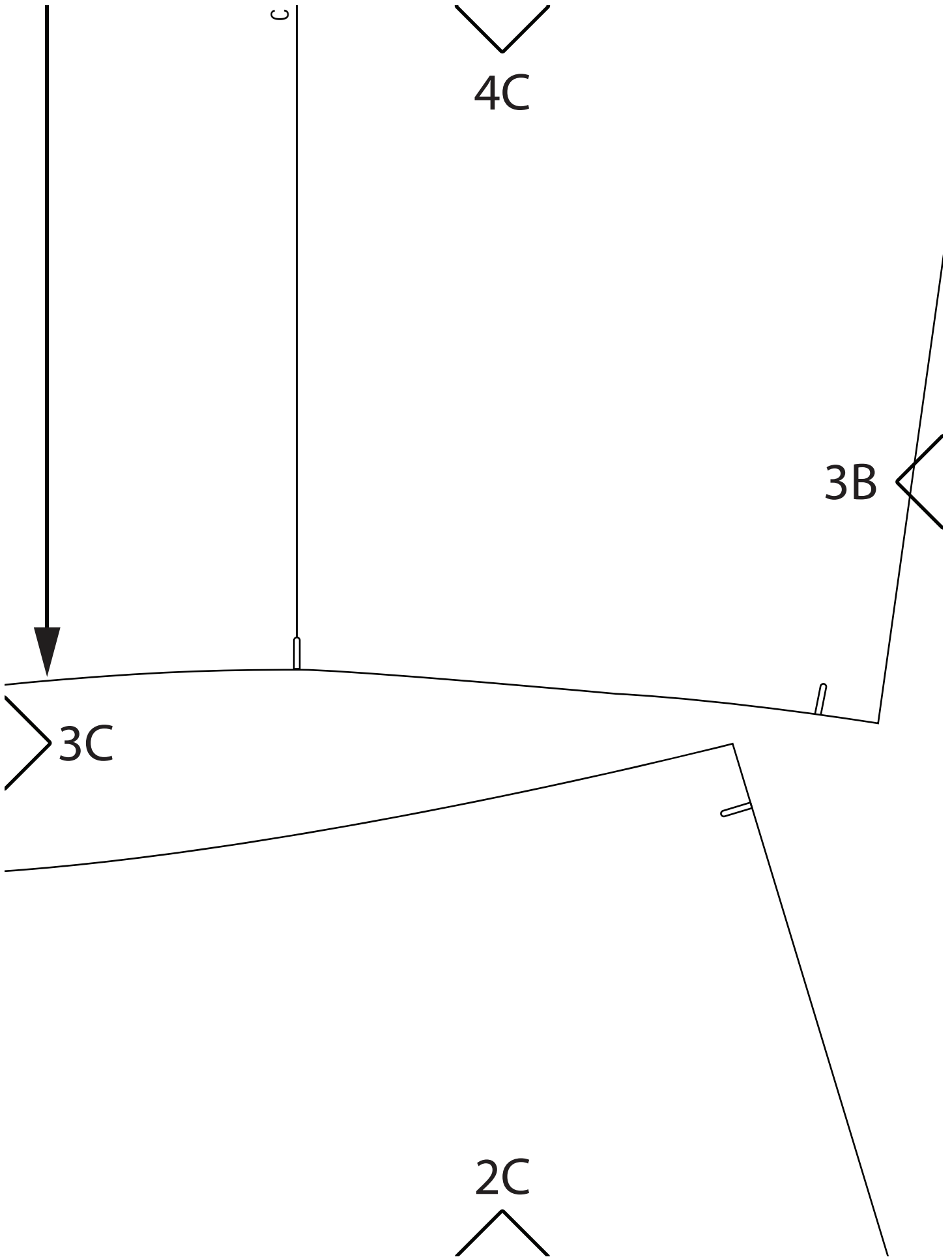
STYLE #SS001

Size: 6

Cut: ①

www.pandemicapparel.com





3A

1/2" SEAM ALLOWANCE INCLUDED

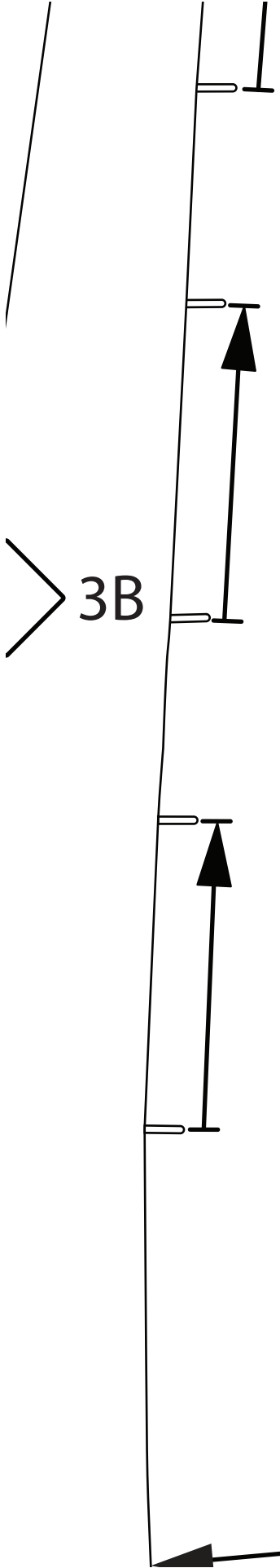
Size: 6
Cut: ①

R.S.U.

4B

2B

GRAIN



3A

4A



 www.pandemicapparel.com

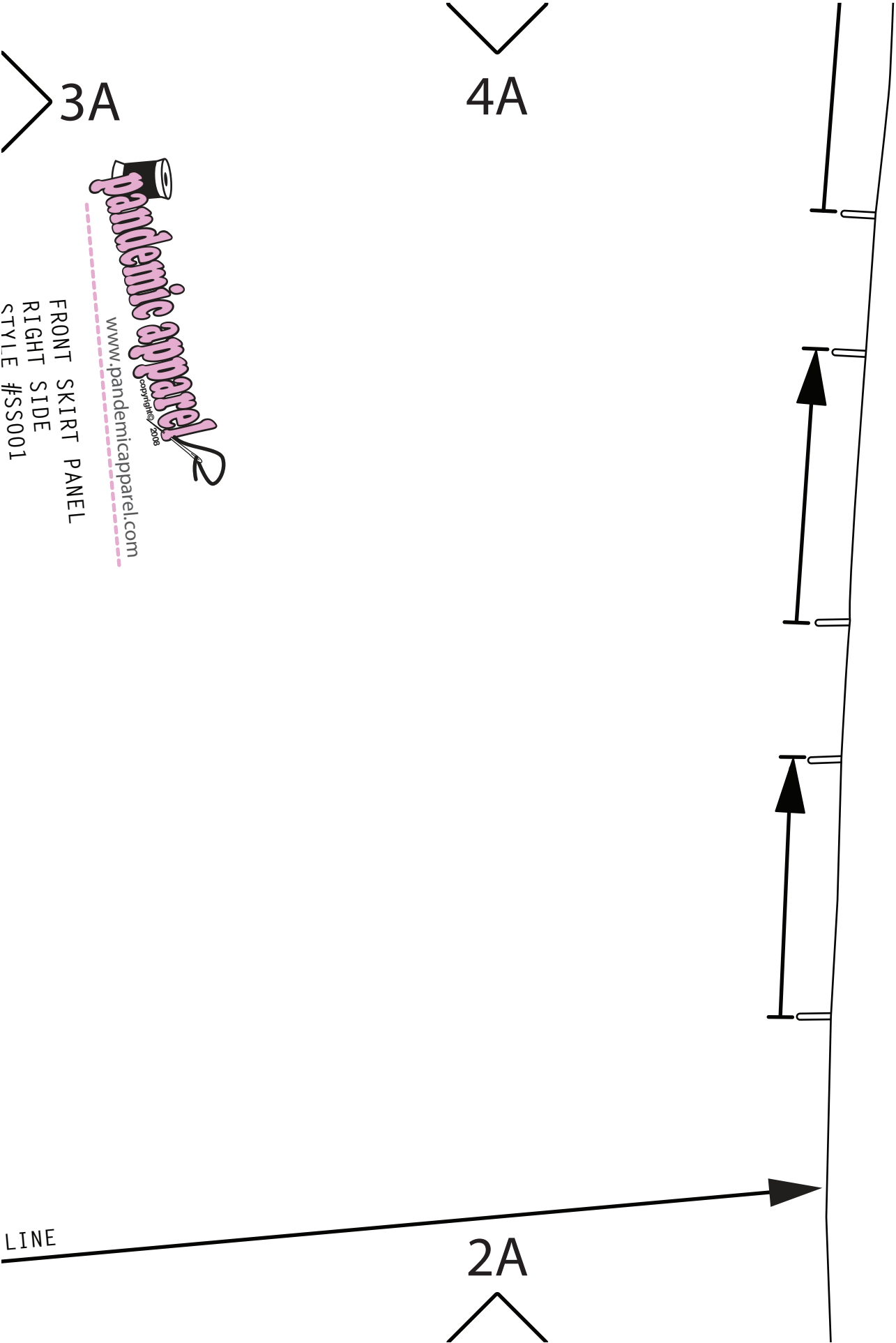
 FRONT SKIRT PANEL

 RIGHT SIDE

 STYLE #SS001

LINE

2A



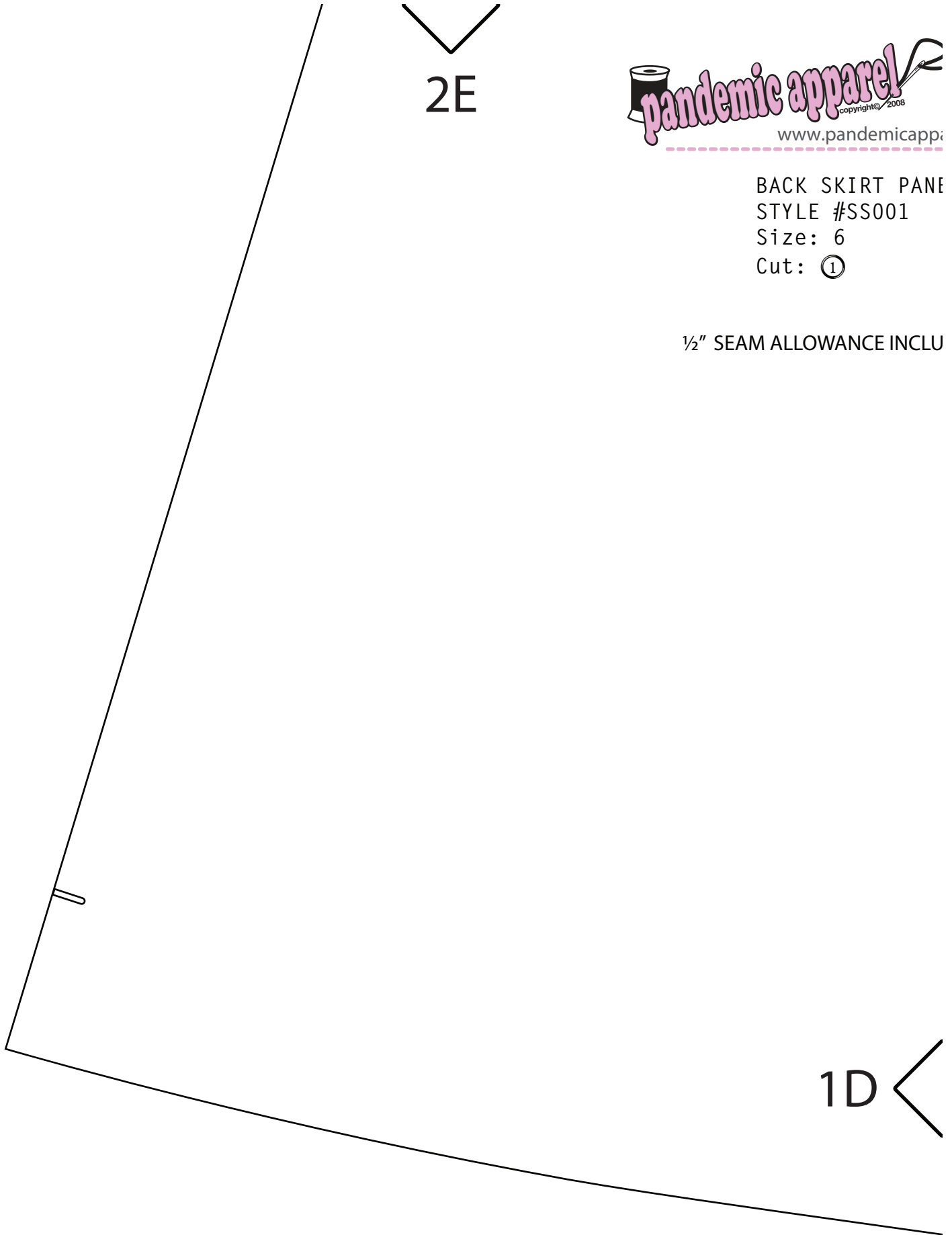


2E



BACK SKIRT PANE
STYLE #SS001
Size: 6
Cut: ①

1/2" SEAM ALLOWANCE INCLU



1D <

›

arel.com

EL

DED

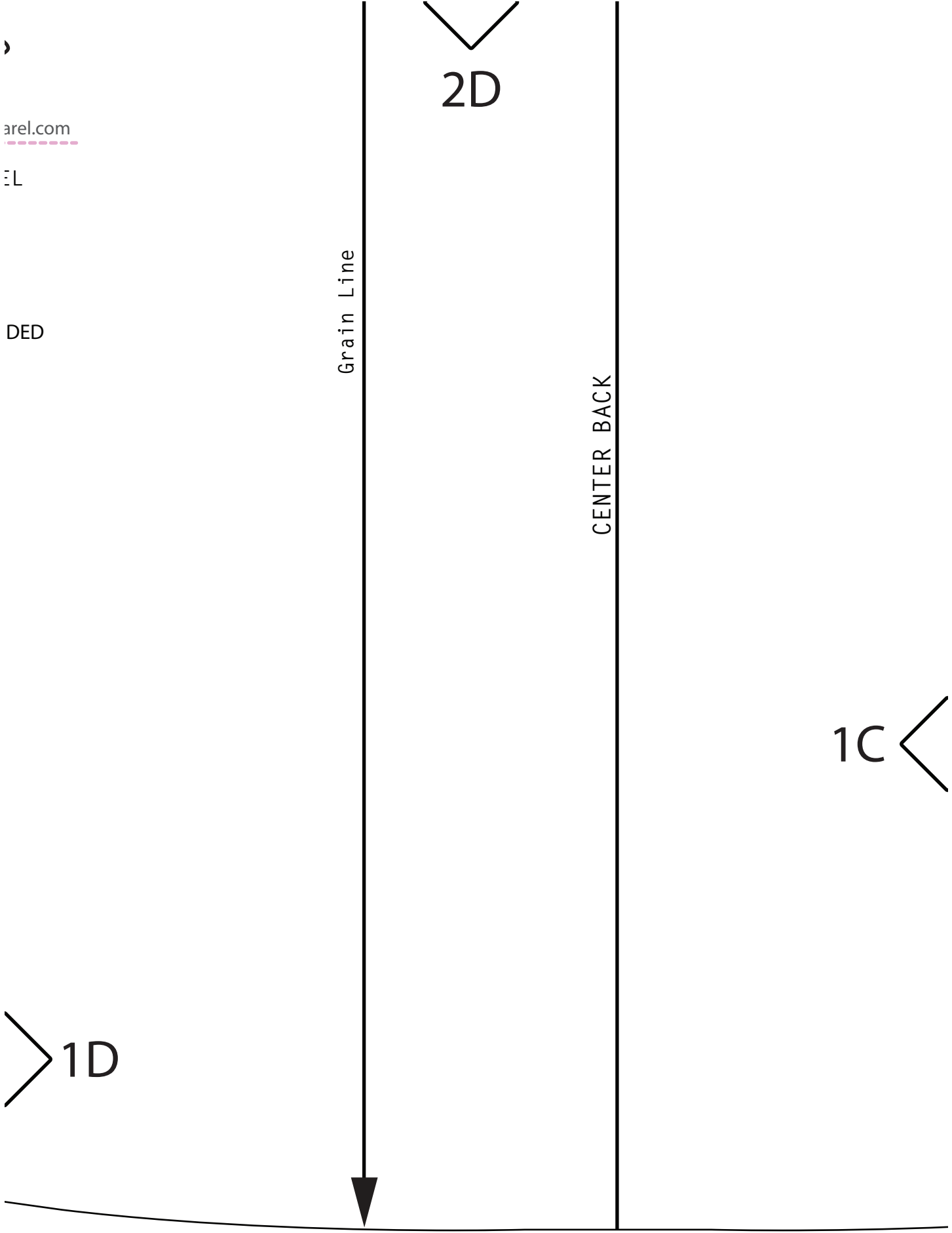
Grain Line

2D

CENTER BACK

1C

1D

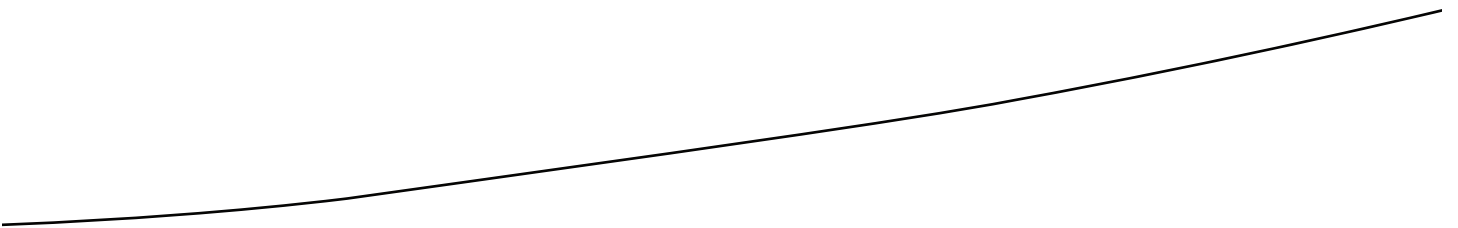


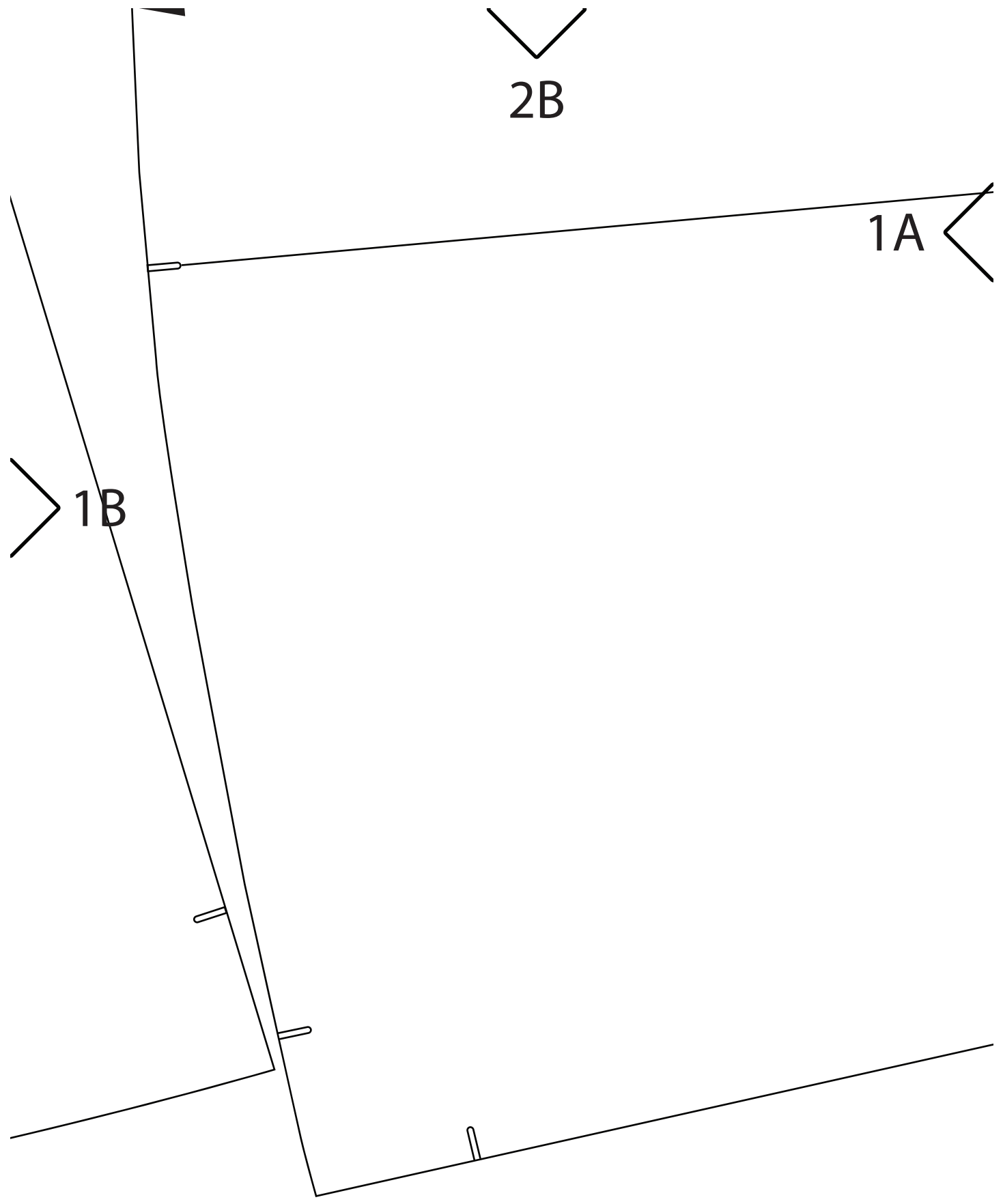
2C

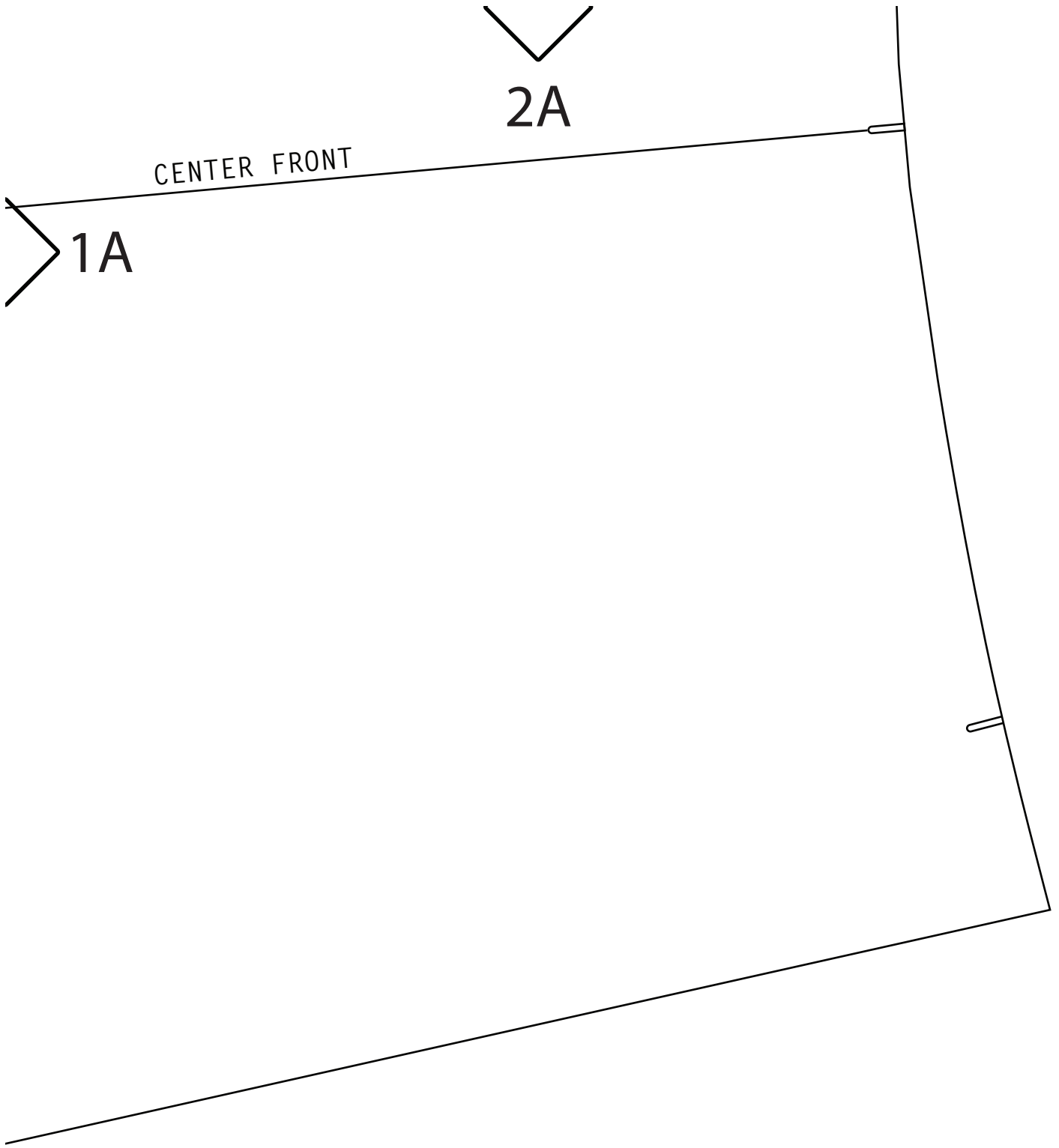


1B

1C







CENTER FRONT

1A

2A